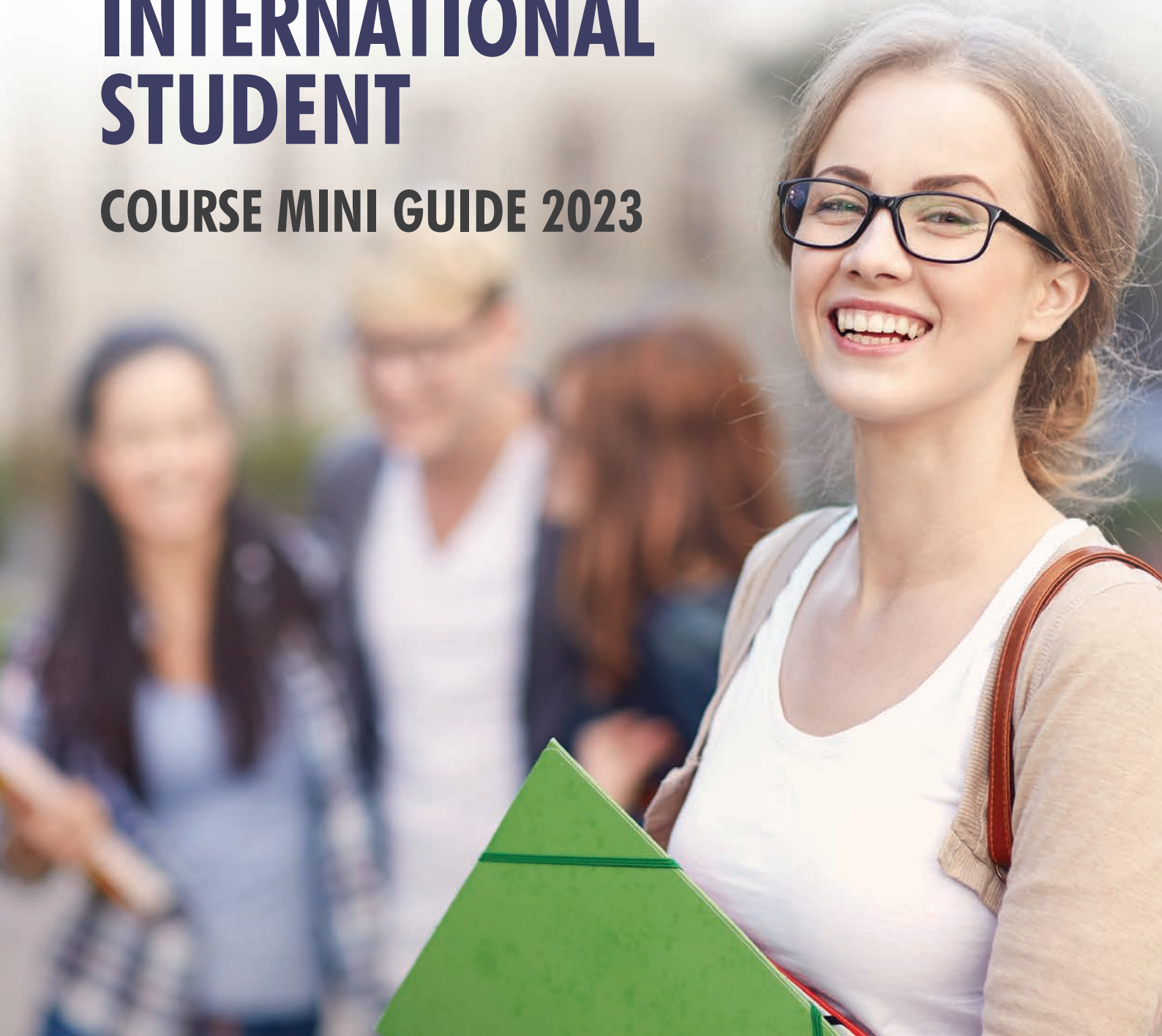


INTERNATIONAL STUDENT

COURSE MINI GUIDE 2023



HIGHER EDUCATION

Undergraduate &
Postgraduate

BUSINESS & MANAGEMENT

Business & Social Media

HOSPITALITY

Commercial Cookery &
Hospitality Management

HEALTH & COMMUNITY SERVICES

EARLY CHILDHOOD EDUCATION

INFORMATION & COMMUNICATIONS TECHNOLOGY

PROFESSIONAL YEAR PROGRAM

Accounting &
Australian Computer Society

ENGLISH LANGUAGE

TABLE OF CONTENTS

President's Message	1
Student Testimonials	2
Our Campuses	3
Our Facilities	4
Study Pathways	5
General English	6
Hospitality & Commercial Cookery	7-10
Health & Community Services	11-12
Early Childhood Education	13
Business & Leadership	14-16
Information & Communications Technology	17
Higher Education	18
Professional Year Programs	19
Short Courses	20

A photograph of the Stanley College building entrance. The building is made of light-colored brick and has a white sign that reads "STANLEY COLLEGE" with a colorful logo. A tree with green and yellow leaves is in the foreground, partially obscuring the building. A metal railing is visible in front of the entrance. The text "Choose the College that Employers Choose." is overlaid in white on the top half of the image.

**Choose the College that
Employers Choose.**

Be future-proof and future-ready!

A PERSONAL MESSAGE FROM OUR PRESIDENT

In light of the dramatic upheavals of recent times, pursuit of an international education must be a greater adventure than ever. For those prepared to face the kind of uncertainty and confusion the world has experienced, there are great opportunities. And the best form of preparation, as we all know, is education.

Of course, adventure carries risk. Australia is known to be a safe destination for international students, but its extraordinary success in managing the COVID pandemic has shown just how stable this country is. In these critical times, only a few education providers were able to provide the supportive learning environment for international students that Stanley College did.

As the world embarks on the exciting journey of post-pandemic recovery, Stanley College is here to help you **DISCOVER** your own path, **LEARN** how to travel it successfully, and to **ENJOY** the journey.

We offer courses in Perth and Adelaide that provide clear pathways to employment and further study. We allow for as much articulation into higher qualifications as possible, with credit arrangements for time and cost savings. We provide scholarship opportunities and financing facilities if needed. We emphasise the importance of practical experience, with Work Based Training in our Vocational courses, and Work Integrated Learning in our Higher Education offerings.

It is certainly an exciting time to be a student. It would be my privilege, and that of the whole Stanley College community, to support you on this great adventure.



Alberto Tassone

President, Stanley College



DISCOVER PERTH & ADELAIDE



Perth and Adelaide are two of the **BEST STUDENT CITIES** in the world.



While Perth has 265 **SUNNY DAYS** every year with the longest coastal shore lines and beautiful beaches; Adelaide has been rated as the 8th **BEST WEATHER IN THE WORLD** due to clean air, low humidity and stable year-around temperatures.



REGULAR FLIGHTS

Come to Perth and Adelaide from any part of the world via any major cities.



EMPLOYMENT OPPORTUNITIES

Two of the fastest growing cities in Australia with a booming industry that creates more employment opportunities, especially in Hospitality, Health and Information Communication Technologies.



FREE PUBLIC TRANSPORT within the city centres.



VIBRANT, MULTICULTURAL CITIES with low crime rates and affordable cost of living.

DISCOVER STANLEY COLLEGE

ONLINE COURSES

Full and partial Online Courses available.

PACKAGED COURSES

Options to package from English, Certificate, Diploma, Undergraduate, and Postgraduate studies.

REPUTATION

Highly recognised and award winning dual-sector education provider.

LOCATION

Conveniently located campuses near public transport.

WORK-BASED TRAINING

Work-based training and internships for most study pathways.

SOCIAL ACTIVITIES

Weekly social, sporting and cultural activities.

FLEXIBLE CLASSES

Weekday and weekend class options available for most courses.

PATHWAY PROGRAMS

University pathways for Diploma and Advanced Diploma courses.

PAYMENT PLANS

Quarterly and monthly payment options available.

Stanley College is a member of the following associations:



STUDENT TESTIMONIALS



I love everything about Stanley College, from the trainers, to facilities to student support. The best part about my course is the Work Based Training. As part of my Certificate III, I was given the opportunity to work at PCEC (Perth Convention and Exhibition Centre) where I worked alongside other chefs who taught me good work ethics and habits whilst working in an industrial kitchen. My trainer in particular would give us tips and shortcuts making sure that we are equipped with proper methods and techniques.

Yosephine, Indonesia
Commercial Cookery



I chose to come to Perth because some of my friends were already here. I like studying at Stanley College because the teachers and classmates are really nice to me. The classrooms and facilities are very new and modern here. After my English course, I will continue my studies into the Diploma of Business. Once I complete my studies, I would like to work with a travel company. Stanley College is a good school and I would recommend to my friends.

Chi Kwai, Hong Kong
General English



I decided to study at Stanley College because it was highly recommended by my friend. I love their campus in West Perth as it is modern and big. The best things about my course are the practical classes and the trainers. They are very friendly and always happy to assist me with everything. Once I finish my course I will be confident and qualified to go back to Italy and continue my career in Early Childhood Education.

Sara, Italy
Early Childhood Education and Care



I am currently studying the Australian Computer Society Professional Year Program at Stanley College and my learning curve has been great. The program has allowed me to be familiar with the Australian work setup and I feel more confident about my career prospects in the ICT field. Coming to Australia as an international student, it is quite challenging to immerse into the local job market as a fresh graduate. This program gives room to improve the skills needed to find employment which otherwise is not possible. One of the best things about this program at Stanley College is the guaranteed internship, so that you can be equipped with both theoretical and practical sides to fit into the Australian job market.

Nishan, Sri Lanka
Australian Computer Society Professional Year Program



OUR CAMPUSES



WEST PERTH CAMPUS

69 Outram Street, West Perth

- 18 Classrooms
- Student Lounge
- Computer Lab/WiFi
- Prayer Room
- Alfresco Area
- Restaurant/Cafe
- Library
- Business Hub



MIRRABOOKA CAMPUS

9 Chesterfield Road, Mirrabooka

- 10 Classrooms
- Student Lounge
- Computer Lab/WiFi
- Prayer Room
- Health Ward
- Crèche



Perth



PERTH CITY CAMPUS

171 James Street, Northbridge

- 8 Classrooms
- Student Lounge
- Computer Lab/WiFi
- Prayer Room
- Alfresco Area
- Commercial Kitchens

Adelaide



ADELAIDE CITY CAMPUS

Level 1, East 50, Greenfell Street, Zurich House, Adelaide

- 8 Classrooms
- Student Lounge
- Computer Lab/WiFi
- Library

Note:

- Stanley College provides free WiFi access for on-campus use
- Materials Fee include equipment and resources used during course delivery of Stanley College

OUR FACILITIES



**COMMERCIAL
KITCHEN**

CRÈCHE

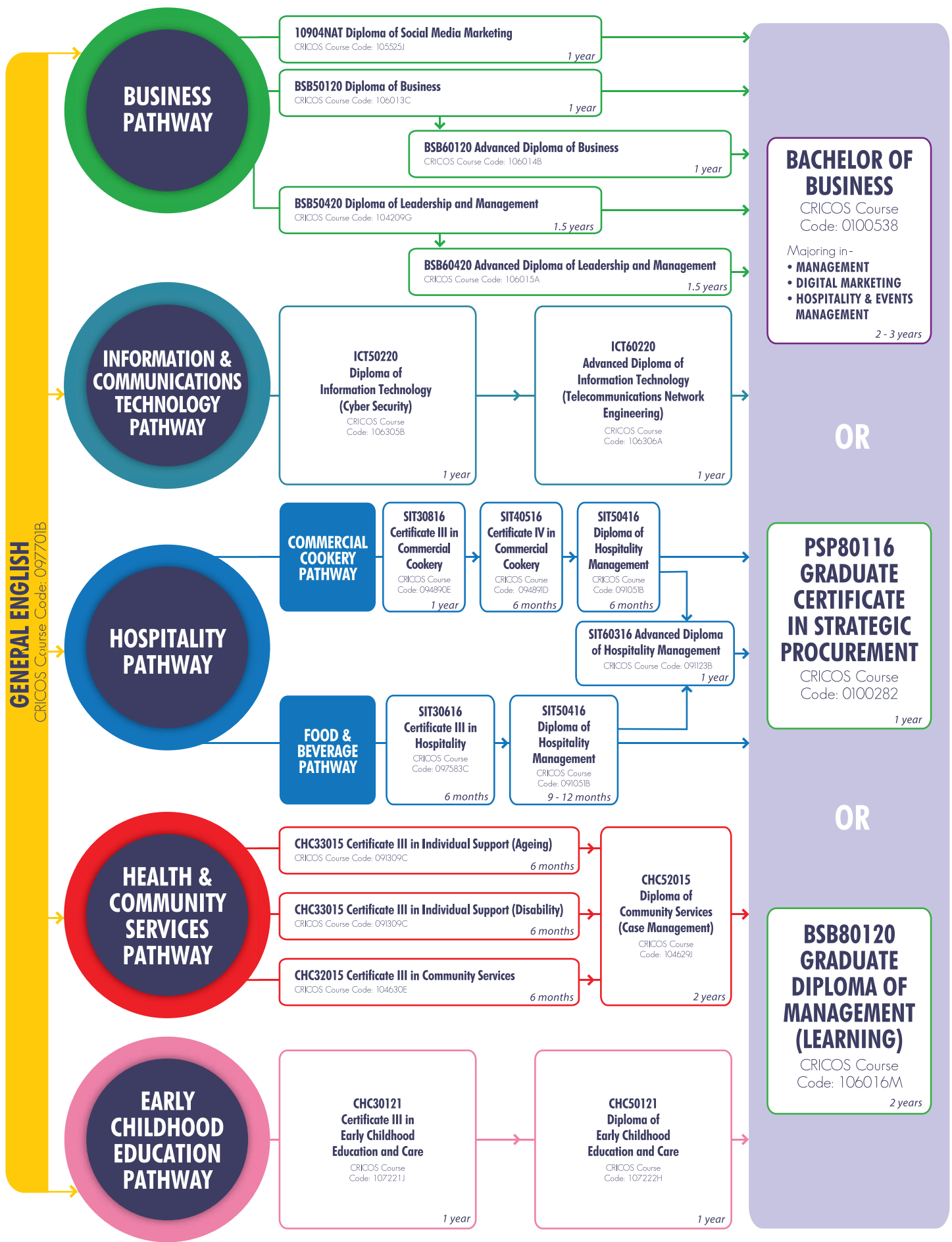


**HEALTH
WARD**

**COMPUTER
LAB**



STUDY PATHWAYS AT STANLEY COLLEGE



Exit at any stage with a qualification

GENERAL ENGLISH

CRICOS Course Code: 097701B



PERTH

INTAKE DATES (2023)

Weekly intake, from 9 January

COURSE DURATION

- 4 - 75 weeks
- 20 scheduled course contact hours per week + FREE optional GIL (Guided Individual Learning) sessions.

Full-time studies requires students to attend 20 hours face-to-face scheduled course contact per week

STUDY MODES

- Face-to-face

COURSE CONTENT

- Speaking and listening
- Grammar
- Vocabulary
- Pronunciation
- Communication and conversation strategies
- Reading and writing
- Excursions

LEVELS

Beginner to Upper-Intermediate

TIMETABLE

- 8:00am - 12:00noon (Mon - Fri)

COST

- Tuition Fee: \$250 per week



SIT30816 CERTIFICATE III IN COMMERCIAL COOKERY

CRICOS Course Code 094890E



PERTH

INTAKE DATES (2023)

2 Jan / 13 Mar / 22 May / 7 Aug / 2 Oct

COURSE DURATION

- 52 weeks (Including 12 weeks of holidays)
 - 2½ days per week
- Full Time studies requires students to attend a minimum of 20 scheduled course contact hours per week*

WORK BASED TRAINING

- 200 hours in 10 weeks

STUDY MODES

- Face-to-face including Practical training and assessment is completed in commercial kitchens, including Perth Convention and Exhibition Centre (PCEC) and Stanley College's The Culinary Workshop.

CAREER OPPORTUNITY

- Cook

COURSE ENTRY REQUIREMENTS

Academic

- Completion of Australian Year 10 or equivalent

English Proficiency

- Intermediate Level of English / IELTS 5.0 / Other recognised English Language tests

COST

- Tuition Fee: \$10,900
- Materials Fee: \$1,100

SIT40516 CERTIFICATE IV IN COMMERCIAL COOKERY

CRICOS Course Code 094891D



PERTH

INTAKE DATES (2023)

2 Jan / 13 Mar / 22 May / 7 Aug / 2 Oct

COURSE DURATION

- 26 weeks (Including 6 weeks of holidays)
 - 2½ days per week
- Full Time studies requires students to attend a minimum of 20 scheduled course contact hours per week*

STUDY MODES

- Face-to-face including practical training and assessment at The Culinary Workshop

CAREER OPPORTUNITY

- Chef
- Chef de partie

COURSE ENTRY REQUIREMENTS

Academic

- Completion of Australian Year 11 or equivalent

English Proficiency

- Intermediate Level of English / IELTS 5.0 / Other recognised English Language tests

COURSE PREREQUISITE REQUIREMENT

- Completion of SIT30816 Certificate III in Commercial Cookery

COST

- Tuition Fee: \$5,200
- Materials Fee: \$300



COMMERCIAL COOKERY PATHWAY

SIT50416 DIPLOMA OF HOSPITALITY MANAGEMENT (COMMERCIAL COOKERY PATHWAY)

CRICOS Course Code 091051B

PERTH



SIT60316 ADVANCED DIPLOMA OF HOSPITALITY MANAGEMENT (COMMERCIAL COOKERY PATHWAY)

CRICOS Course Code 091123B

PERTH



INTAKE DATES (2023)

2 Jan / 13 Mar / 22 May / 7 Aug / 2 Oct

COURSE DURATION

- 26 weeks (Including 6 weeks of holidays)
- 2½ days per week

Full Time studies requires students to attend a minimum of 20 scheduled course contact hours per week

STUDY MODES

- Face-to-face including practical training and assessment at The Culinary Workshop

CAREER OPPORTUNITY

- Chef de Cuisine
- Kitchen Manager
- Sous Chef

COURSE ENTRY REQUIREMENTS

Academic

- Completion of Australian Year 12 or equivalent

English Proficiency

- Upper-intermediate Level of English / IELTS 5.5 / Other recognised English Language tests

COURSE PREREQUISITE REQUIREMENT

- Completion of SIT40516 Certificate IV in Commercial Cookery

COST

- Tuition Fee: \$5,200
- Materials Fee: \$150

INTAKE DATES (2023)

Standard Pathway

2 Jan / 13 Mar / 22 May / 7 Aug / 2 Oct

Intensive Pathway

TBC

COURSE DURATION

- 52 weeks (Including 12 weeks of holidays) **Standard Pathway**
- 26 weeks (Including 2 weeks of holidays) **Intensive Pathway**
- 2½ days per week

Full Time studies requires students to attend a minimum of 20 scheduled course contact hours per week

STUDY MODES

- Face-to-face including Business Hub simulated workplace activities

CAREER OPPORTUNITY

- Executive Chef
- Head Chef
- Executive Sous Chef

COURSE ENTRY REQUIREMENTS

Academic

- Completion of Australian Year 12 or equivalent

English Proficiency

- Upper-intermediate Level of English / IELTS 5.5 / Other recognised English Language tests

COURSE PREREQUISITE REQUIREMENT

- SIT50416 Diploma of Hospitality Management (Commercial Cookery Pathway)

COST

Standard Pathway

- Tuition Fee: \$9,600
- Materials Fee: \$300

Intensive Pathway

- Tuition Fee: \$4,800
- Materials Fee: \$300

A member of:



PRACTICAL VENUES FOR COMMERCIAL COOKERY and HOSPITALITY COURSES



THE CULINARY WORKSHOP

As the official training venue for Stanley College hospitality courses, The Culinary Workshop is open to the general public and has two commercial kitchens and a restaurant on campus. This provides students with a distinct advantage as they can develop and improve their cookery, management, customer service and other skills in a real work environment.

PRACTICAL TRAINING AT THE PERTH CONVENTION AND EXHIBITION CENTRE (PCEC)

The Perth Convention and Exhibition Centre (PCEC) is Western Australia's only purpose-built conference, exhibition, and meeting space. The convention centre has six multi-function exhibition pavilions, a theatre with 2,500 capacity and a ballroom with stunning views over the Swan River.

Stanley College and our students are given exclusive access to undertake their practical training in the convention centre's commercial kitchen.



SIT30616 CERTIFICATE III IN HOSPITALITY

CRICOS Course Code : 097583C



PERTH

INTAKE DATES (2023)

2 Jan / 13 Mar / 22 May / 7 Aug / 2 Oct

COURSE DURATION

- 26 weeks (Including 7 weeks of holidays)
- 2½ days per week
- Full Time studies requires students to attend a minimum of 20 scheduled course contact hours per week*

STUDY MODES

- Face-to-face including practical training and assessment at the Culinary Workshop

WORK-BASED TRAINING

- 140 hours in 7 weeks

CAREER OPPORTUNITY

- Espresso Coffee Machine Operator
- Food and Beverage Attendant
- Function Attendant
- Function Host
- Restaurant Host
- Senior Bar Attendant
- Waiter

COURSE ENTRY REQUIREMENTS

Academic

- Completion of Australian Year 10 or equivalent

English Proficiency

- Intermediate Level of English / IELTS 5.0 / Other recognised English Language tests

COST

- Tuition Fee: \$5,200
- Materials Fee: \$300

SIT50416 DIPLOMA OF HOSPITALITY MANAGEMENT (FOOD & BEVERAGE PATHWAY)

CRICOS Course Code 091051B



PERTH

OPTION 1: 36 Weeks (Advanced Standing)

INTAKE DATES (2023)

2 Jan / 13 Mar / 22 May / 7 Aug / 2 Oct

COURSE DURATION

- 36 weeks (including 6 weeks of holidays)
- 2½ days per week
- Full Time studies requires students to attend a minimum of 20 scheduled course contact hours per week*

STUDY MODES

- Face-to-face including practical training and assessment at the Culinary Workshop

CAREER OPPORTUNITY

- Banquet or Function Manager
- Restaurant Manager
- Bar and Cafe Manager
- Club Manager
- Motel Manager
- Unit Manager (Catering Operations)

COURSE ENTRY REQUIREMENTS

Academic

- Completion of Australian Year 12 or equivalent

English Proficiency

- Upper-intermediate Level of English / IELTS 5.5 / Other recognised English Language tests

COURSE PREREQUISITE REQUIREMENT

- Completion of the SIT30616 Certificate III in Hospitality

COST

- Tuition Fee: \$6,600
- Materials Fee: \$150



FOOD AND BEVERAGE PATHWAY

SIT50416 DIPLOMA OF HOSPITALITY MANAGEMENT (FOOD & BEVERAGE PATHWAY)

CRICOS Course Code 091051B

PERTH



SIT60316 ADVANCED DIPLOMA OF HOSPITALITY MANAGEMENT (FOOD AND BEVERAGE)

CRICOS Course Code 091123B

PERTH



Option 2: 52 Weeks (Direct Entry)

INTAKE DATES (2023)

2 Jan / 13 Mar / 22 May / 7 Aug / 2 Oct

COURSE DURATION

- 52 Weeks (including 12 weeks of holidays)
- 2½ days per week.

Full Time studies requires students to attend a minimum of 20 scheduled course contact hours per week

STUDY MODES

- Face-to-face including practical training and assessment at the Culinary Workshop

WORK-BASED TRAINING

- 108 hours in 5 weeks

CAREER OPPORTUNITY

- Banquet or Function Manager
- Restaurant Manager
- Bar and Cafe Manager
- Club Manager
- Motel Manager
- Unit Manager (Catering Operations)

COURSE ENTRY REQUIREMENTS

Academic

- Completion of Australian Year 12 or equivalent

English Proficiency

- Upper-intermediate Level of English / IELTS 5.5 / Other recognised English Language tests

COURSE PREREQUISITE REQUIREMENT

- No prerequisite entry requirements exist for this course.

COST

- Tuition Fee: \$8,600
- Materials Fee: \$600

INTAKE DATES (2023)

Standard Pathway

2 Jan / 13 Mar / 22 May / 7 Aug / 2 Oct

Intensive Pathway

TBC

COURSE DURATION

- 52 weeks (Including 12 weeks of holidays) **Standard Pathway**
- 26 weeks (Including 2 weeks of holidays) **Intensive Pathway**
- 2½ days per week.

Full Time studies requires students to attend a minimum of 20 scheduled course contact hours per week

STUDY MODES

- Face-to-face including Business Hub simulated workplace activities

CAREER OPPORTUNITY

- Area Manager or Operations Manager
- Cafe Owner or Manager
- Club Secretary or Manager
- Motel Owner or Manager
- Food and Beverage Manager

COURSE ENTRY REQUIREMENTS

Academic

- Completion of Australian Year 12 or equivalent

English Proficiency

- Upper-intermediate Level of English / IELTS 5.5 / Other recognised English Language tests

COURSE PREREQUISITE REQUIREMENT

- Completion of SIT50416 Diploma of Hospitality Management (Food and Beverage Pathway)

COST

Standard Pathway

- Tuition Fee: \$9,600
- Materials Fee: \$300

Intensive Pathway

- Tuition Fee: \$4,800
- Materials Fee: \$300

INDUSTRY PARTNERS



CHC33015 CERTIFICATE III IN INDIVIDUAL SUPPORT (AGEING)

CRICOS Course Code 091309C



PERTH

INTAKE DATES (2023)

16 Jan / 13 Feb / 13 Mar / 10 Apr / 8 May / 5 Jun / 3 Jul /
31 Jul / 28 Aug / 25 Sep / 23 Oct / 20 Nov

COURSE DURATION

- 22 weeks (Including 6 weeks of holidays) **Standard Pathway**
- 16 weeks **Intensive Pathway**
- 3 days per week
- Weekday & weekend classes available

*Full Time studies requires students to attend a minimum of
20 scheduled course contact hours per week*

WORK-BASED TRAINING

- 152 hours in 4 weeks
- National Police Clearance (WA)[†]
- National Disability Insurance Scheme (NDIS) screening certificate[^]
- Medical Clearance may also be required[^]
- Evidence of Flu Vaccination[^]
- Evidence of COVID-19 Vaccination^{^#}

*[†]Required to complete the work-based training component of the course
[#]Fully Vaccinated - You have received at least two doses of a COVID-19 Vaccination AND
a mandatory third dose when it is due (currently 3 months after 2nd dose)*

STUDY MODES

- Face-to-face including practical simulated activities in Stanley College ward

CAREER OPPORTUNITY

- Accommodation Support Worker
- Personal Care Giver
- Respite Care Worker

COURSE ENTRY REQUIREMENTS

Academic

- Completion of Australian Year 10 or equivalent

English Proficiency

- Intermediate Level of English / IELTS 5.0 / Other recognised English Language tests

COST

Standard Pathway

- Tuition Fee: \$4,300
- Materials Fee: \$300

Optional add-on:

Disability (DIS): \$840

Intensive Pathway

- Tuition Fee: \$1,950
- Materials Fee: N/A

Optional add-on:

Disability (DIS): \$420

CHC33015 CERTIFICATE III IN INDIVIDUAL SUPPORT (DISABILITY)

CRICOS Course Code 091309C



PERTH

INTAKE DATES (2023)

16 Jan / 13 Feb / 13 Mar / 10 Apr / 8 May / 5 Jun / 3 Jul /
31 Jul / 28 Aug / 25 Sep / 23 Oct / 20 Nov

COURSE DURATION

- 22 weeks (Including 6 weeks of holidays) **Standard Pathway**
- 16 weeks **Intensive Pathway**
- 3 days per week
- Weekday classes available

*Full Time studies requires students to attend a minimum of
20 scheduled course contact hours per week*

WORK-BASED TRAINING

- 152 hours in 4 weeks
- National Police Clearance (WA)[†]
- National Disability Insurance Scheme (NDIS) screening certificate[^]
- Medical Clearance may also be required[^]
- Evidence of Flu Vaccination[^]
- Evidence of COVID-19 Vaccination^{^#}

*[†]Required to complete the work-based training component of the course
[#]Fully Vaccinated - You have received at least two doses of a COVID-19 Vaccination AND
a mandatory third dose when it is due (currently 3 months after 2nd dose)*

STUDY MODES

- Face-to-face including practical simulated activities in Stanley College ward

CAREER OPPORTUNITY

- Disability Services Worker
- Residential Care Officer
- Community Worker
- Disability Support Worker
- Personal Care Giver
- Residential Disability Support Worker
- Respite Care Worker

COURSE ENTRY REQUIREMENTS

Academic

- Completion of Australian Year 10 or equivalent

English Proficiency

- Intermediate Level of English / IELTS 5.0 / Other recognised English Language tests

COST

Standard Pathway

- Tuition Fee: \$4,300
- Materials Fee: \$300

Optional add-on:

Ageing (AGE): \$840

Intensive Pathway

- Tuition Fee: \$1,950
- Materials Fee: N/A

Optional add-on:

Ageing (AGE): \$420

HEALTH AND COMMUNITY SERVICES



CHC32015 CERTIFICATE III IN COMMUNITY SERVICES

CRICOS Course Code 104630E



PERTH

INTAKE DATES (2023)

16 Jan / 13 Feb / 13 Mar / 10 Apr / 8 May / 5 Jun / 3 Jul /
31 Jul / 28 Aug / 25 Sep / 23 Oct / 20 Nov

COURSE DURATION

- 22 weeks (Including 6 weeks of holidays) **Standard Pathway**
- 15 weeks **Intensive Pathway**
- 3 days per week
- Weekday & weekend classes available

*Full Time studies requires students to attend a minimum of
20 scheduled course contact hours per week*

WORK-BASED TRAINING

- 152 hours in 4 weeks **Standard Pathway**
- 120 hours in 3 weeks **Intensive Pathway**
- National Police Clearance (WA)[^]
- National Disability Insurance Scheme (NDIS) screening certificate[^]
- Medical Clearance may also be required[^]
- Evidence of Flu Vaccination[^]
- Current Working with Children Check (WWCC)[^]
- Evidence of COVID-19 Vaccination^{^#}

*[^]Required to complete the work-based training component of the course
[#]Fully Vaccinated = You have received at least two doses of a COVID-19 Vaccination AND
a mandatory third dose when it is due (currently 3 months after 2nd dose)*

STUDY MODES

- Face-to-face including practical simulated activities in Stanley College ward

CAREER OPPORTUNITY

- Migrant Support Worker
- Neighbourhood Centre Worker
- Support Workers (Community Services)
- Community Care Worker
- Client Contact
- Assistant Community Worker

COURSE ENTRY REQUIREMENTS

Academic

- Completion of Australian Year 10 or equivalent

English Proficiency

- Intermediate Level of English / IELTS 5.0 / Other recognised English Language tests

COST

Standard Pathway

- Tuition Fee: \$4,300
- Materials Fee: \$300

Intensive Pathway

- Tuition Fee: \$1,950
- Materials Fee: N/A

CHC52015 DIPLOMA OF COMMUNITY SERVICES (CASE MANAGEMENT)

CRICOS Course Code 104629J



PERTH

INTAKE DATES (2023)

2 Jan / 23 Jan / 6 Mar / 3 Apr / 1 May / 12 Jun / 24 Jul / 4 Sep

COURSE DURATION

- 104 weeks (Including 24 weeks of holidays)
- 3 days per week
- Weekday classes available

*Full Time studies requires students to attend a minimum of
20 scheduled course contact hours per week*

WORK-BASED TRAINING

- 28 weeks (Work-Based Training of 560 hours)
- National Police Clearance (WA)[^]
- National Disability Insurance Scheme (NDIS) screening certificate[^]
- Medical Clearance may also be required[^]
- Evidence of Flu Vaccination[^]
- Current Working with Children Check (WWCC)[^]
- Evidence of COVID-19 Vaccination^{^#}

*[^]Required to complete the work-based training component of the course
[#]Fully Vaccinated = You have received at least two doses of a COVID-19 Vaccination AND
a mandatory third dose when it is due (currently 3 months after 2nd dose)*

STUDY MODES

- Face-to-face including practical simulated activities in Stanley College ward

CAREER OPPORTUNITY

- Child Welfare Officer
- Community Services Worker
- Social Housing Coordinator
- Community services Case Manager

COURSE ENTRY REQUIREMENTS

Academic

- Completion of Australian Year 12 or equivalent

English Proficiency

- Upper-Intermediate Level of English / IELTS 5.5 / Other recognised English Language tests

COST

- Tuition Fee: \$18,000
- Materials Fee: \$900

* Course duration does not include holidays, and requires WBT placement to be completed full time (minimum 38 hours per week)

INDUSTRY PARTNERS



CHC30121 CERTIFICATE III IN EARLY CHILDHOOD EDUCATION AND CARE

CRICOS Course Code 107221J

PERTH



INTAKE DATES (2023)

9 Jan / 6 Feb / 6 Mar / 3 Apr / 1 May / 29 May /
26 Jun / 24 Jul / 21 Aug / 18 Sep / 16 Oct / 13 Nov / 11 Dec

COURSE DURATION

- 52 weeks (Including 12 weeks of holidays)
- 3 days per week

*Full Time studies requires students to attend a minimum of
20 scheduled course contact hours per week*

WORK-BASED TRAINING

- 240 hours in 12 weeks
- Current Working with Children Check*
- National Police Clearance*

**Required to complete the work-based training component of the course*

STUDY MODES

- Face-to-face including simulated work experience (in the Stanley College Crèche)

CAREER OPPORTUNITY

- Family Day Care Educator
- Kindergarten Assistant
- Long Day Care Educator
- OSHC Educator

COURSE ENTRY REQUIREMENTS

Academic

- Completion of Australian Year 10 or equivalent

English Proficiency

- Intermediate Level of English / IELTS 5.0 / Other recognised English Language tests

COST

- Tuition Fee: \$8,200
- Materials Fee: \$450

CHC50121 DIPLOMA OF EARLY CHILDHOOD EDUCATION AND CARE

CRICOS Course Code 107222H

PERTH



INTAKE DATES (2023)

16 Jan / 13 Feb / 13 Mar / 10 Apr / 15 May / 12 Jun /
17 Jul / 14 Aug / 11 Sep / 9 Oct / 13 Nov

COURSE DURATION

- 52 weeks (Including 12 weeks of holidays)
- 3 days per week
- Weekday & weekend classes available

*Full Time studies requires students to attend a minimum of
20 scheduled course contact hours per week*

WORK-BASED TRAINING

- 315 hours in 14 weeks
- Current Working with Children Check*
- National Police Clearance*

**Required to complete the work-based training component of the course*

STUDY MODES

- Face-to-face

CAREER OPPORTUNITY

- Centre Manager
- OSHC Coordinator

COURSE ENTRY REQUIREMENTS

Academic

- Completion of Australian Year 12 or equivalent

English Proficiency

- Upper-intermediate Level of English / IELTS 5.5 / Other recognised English Language tests

COURSE PREREQUISITE REQUIREMENT

Entry to this qualification is open to individuals who:

- hold a CHC30121 Certificate III in Early Childhood Education and Care or
- CHC30113 Certificate III in Early Childhood Education and Care.

COST

- Tuition Fee: \$9,600
- Materials Fee: \$450

INDUSTRY PARTNERS



EARLY CHILDHOOD EDUCATION

10904NAT DIPLOMA OF SOCIAL MEDIA MARKETING

CRICOS Course Code 1055251



PERTH and ADELAIDE

INTAKE DATES (2023)

2 Jan / 13 Mar / 22 May / 7 Aug / 2 Oct

COURSE DURATION

- 52 weeks (Including 12 weeks of holidays)
 - 2½ days per week
- Full Time studies requires students to attend a minimum of 20 scheduled course contact hours per week*

STUDY MODES

- Face-to-face Including Business hub - simulated workplace
- Online study

CAREER OPPORTUNITY

- Digital / Social Media Strategy Manager
- Content Marketing Strategist
- Digital / Social Media Coordinator

COURSE ENTRY REQUIREMENTS

Academic

- Completion of Australian Year 12 or equivalent

English Proficiency

- Upper-Intermediate Level of English / IELTS 5.5 / Other recognised English Language tests

COST

- Tuition Fee: \$7,600
- Materials Fee: \$450



A member of:

Chamber of Commerce and Industry WA

BSB50120 DIPLOMA OF BUSINESS

CRICOS Course Code 106013C



PERTH and ADELAIDE

INTAKE DATES (2023)

2 Jan / 23 Jan / 13 Mar / 3 Apr / 24 Apr / 22 May / 7 Aug / 2 Oct

COURSE DURATION

- 52 weeks (Including 12 weeks of holidays)
 - 2½ days per week
- Full Time studies requires students to attend a minimum of 20 scheduled course contact hours per week*

STUDY MODES

- Face-to-face Including Business hub - simulated workplace
- Online study

CAREER OPPORTUNITY

- Frontline Manager / Team Leader
- Administration Manager
- Business Development Manager

COURSE ENTRY REQUIREMENTS

Academic

- Completion of Australian Year 12 or equivalent

English Proficiency

- Upper-Intermediate Level of English / IELTS 5.5 / Other recognised English Language tests

COST

- Tuition Fee: \$8,600
- Materials Fee: \$300



STUDY ONLINE NOW
for offshore students



BUSINESS AND LEADERSHIP

BSB60120 ADVANCED DIPLOMA OF BUSINESS

CRICOS Course Code: 106014Bw

PERTH

INTAKE DATES (2023)

2 Jan / 13 Mar / 22 May / 7 Aug / 2 Oct

COURSE DURATION

- 52 weeks (Including 12 weeks of holidays)
 - 2½ days per week
- Full Time studies requires students to attend a minimum of 20 scheduled course contact hours per week*

STUDY MODES

- Face-to-face Including Business hub - simulated workplace

COURSE ENTRY REQUIREMENTS

Academic

- Completion of Australian Year 12 or equivalent

English Proficiency

- Upper-Intermediate Level of English / IELTS 5.5 / Other recognised English Language tests

COURSE PREREQUISITE REQUIREMENT

- Have completed a Diploma or Advanced Diploma from the BSB Training Package; or have two years equivalent full-time relevant workplace experience in an operational or leadership role in an enterprise.

COST

- Tuition Fee: \$8,600
- Materials Fee: \$300

BSB50420 DIPLOMA OF LEADERSHIP AND MANAGEMENT

CRICOS Course Code 104209G



PERTH

INTAKE DATES (2023)

2 Jan / 13 Mar / 22 May / 7 Aug / 2 Oct

COURSE DURATION

- 78 weeks (Including 18 weeks of holidays)
- 2½ days per week
- Weekday & weekend classes available

Full Time studies requires students to attend a minimum of 20 scheduled course contact hours per week

STUDY MODES

- Face-to-face including Business Hub Simulated

CAREER OPPORTUNITY

- Sales Team Manager
- Frontline Manager

COURSE ENTRY REQUIREMENTS

Academic

- Completion of Australian Year 12 or equivalent

English Proficiency

- Upper-Intermediate Level of English / IELTS 5.5 / Other recognised English Language tests

COST

- Tuition Fee: \$12,900
- Materials Fee: \$450

BSB60420 ADVANCED DIPLOMA OF LEADERSHIP AND MANAGEMENT

CRICOS Course Code 106015A



PERTH

INTAKE DATES (2023)

2 Jan / 13 Mar / 22 May / 7 Aug / 2 Oct

COURSE DURATION

- 78 weeks (Including 18 weeks of holidays)
- 2½ days per week
- Weekday & weekend classes available

Full Time studies requires students to attend a minimum of 20 scheduled course contact hours per week

STUDY MODES

- Face-to-face including Business Hub Simulated

CAREER OPPORTUNITY

- Department Manager
- Senior Manager
- Regional Manager

COURSE ENTRY REQUIREMENTS

Academic

- Completion of Australian Year 12 or equivalent

English Proficiency

- Upper-Intermediate Level of English / IELTS 5.5 / Other recognised English Language tests

COURSE PREREQUISITE REQUIREMENT

- Have completed a Diploma or Advanced Diploma from the BSB Training Package; or have two years equivalent full-time relevant workplace experience in an operational or leadership role in an enterprise.

COST

- Tuition Fee: \$12,900
- Materials Fee: \$450



PSP80116 GRADUATE CERTIFICATE IN STRATEGIC PROCUREMENT

CRICOS Course Code: 0100282

PERTH



INTAKE DATES (2023)

23 Jan / 1 May / 7 Aug / 30 Oct

COURSE DURATION

- 52 weeks (Including 12 weeks of holidays)
- 2½ days per week

Full Time studies requires students to attend a minimum of 20 scheduled course contact hours per week

STUDY MODES

- Face-to-face including Business Hub Simulated

CAREER OPPORTUNITY

- Strategic Procurement Manager
- Supply and Distribution Manager
- Procurement Manager
- Logistics Manager
- Supply Chain Manager
- Head of Logistics/Transport
- Strategic Purchasing Manager

COURSE ENTRY REQUIREMENTS

Academic

- Completion of a recognised degree or diploma or advanced diploma or equivalent

English Proficiency

- Upper-Intermediate Level of English / IELTS 6.0 / Other recognised English Language tests

COURSE PREREQUISITE REQUIREMENT

- Diploma/Advanced Diploma qualification in any field of study (onshore or offshore) or equivalent; or
- Bachelor Degree in any field of study (onshore or offshore) or equivalent; or
- Evidence of relevant work experience.

COST

- Tuition Fee: \$9,800
- Materials Fee: \$450

BSB80120 GRADUATE DIPLOMA OF MANAGEMENT (LEARNING)

CRICOS Course Code: : 106016M

PERTH



INTAKE DATES (2023)

23 Jan / 1 May / 7 Aug / 30 Oct

COURSE DURATION

- 104 weeks (Including 24 weeks of holidays)
- 2½ days per week

Full Time studies requires students to attend a minimum of 20 scheduled course contact hours per week

STUDY MODES

- Face-to-face including Business Hub Simulated

CAREER OPPORTUNITY

- Registered Training Organisation (RTO) Manager
- Registered Training Organisation (RTO) Director

COURSE ENTRY REQUIREMENTS

Academic

- Completion of a recognised degree or diploma or advanced diploma or equivalent

English Proficiency

- Upper-Intermediate Level of English / IELTS 6.0 / Other recognised English Language tests

COURSE PREREQUISITE REQUIREMENT

- Diploma/Advanced Diploma qualification in any field of study (onshore or offshore) or equivalent; or
- Bachelor Degree in any field of study (onshore or offshore) or equivalent; or
- Evidence of relevant work experience (no less than 3 years in a senior management or leadership position).

COST

- Tuition Fee: \$19,600
- Materials Fee: \$900



ICT50220 DIPLOMA OF INFORMATION TECHNOLOGY (Cyber Security)

CRICOS Course Code: 106305B

PERTH



ICT60220 ADVANCED DIPLOMA OF INFORMATION TECHNOLOGY (Telecommunications Network Engineering)

CRICOS Course Code: 106306A



PERTH

INTAKE DATES (2023)

16 Jan / 27 Mar / 5 Jun / 14 Aug / 23 Oct

COURSE DURATION

- 52 weeks (Including 12 weeks of holidays)
- 2½ days per week

Full Time studies requires students to attend a minimum of 20 scheduled course contact hours per week

STUDY MODES

- Face-to-face

CAREER OPPORTUNITY

- Cybersecurity Officer
- Cybersecurity Consultant
- Network Administrator
- Network Support Coordinator
- ICT Support Officer, ICT Manager
- ICT Systems Administrator
- Information Systems
- Office Manager, Office Systems Administrator
- Systems Manager

COURSE ENTRY REQUIREMENTS

Academic

- Completion of Australian Year 12 or equivalent

English Proficiency

- Upper-Intermediate Level of English / IELTS 5.5 / Other recognised English Language tests

COST

- Tuition Fee: \$11,000
- Materials Fee: \$1000

INTAKE DATES (2023)

16 Jan / 17 Apr / 17 Jul / 9 Oct

COURSE DURATION

- 52 weeks (Including 12 weeks of holidays)
- 2½ days per week

STUDY MODES

- Face-to-face including practical simulated work activities

CAREER OPPORTUNITY

- Telecommunications Network Administrator
- Telecommunications Network Planner
- Telecommunications Network Designer
- Telecommunications Technical Officer
- Telecommunications Technologist

COURSE ENTRY REQUIREMENTS

Academic

- Completion of Australian Year 12 or equivalent

English Proficiency

- Upper-Intermediate Level of English / IELTS 5.5 / Other recognised English Language tests

COST

- Tuition Fee: \$11,000
- Materials Fee: \$1000

Stanley College is an official partner of :



EC-COUNCIL | ACADEMIA
PARTNER



International ICT Industry Recognised Certificates also available:



INFORMATION & COMMUNICATIONS TECHNOLOGY



BACHELOR OF BUSINESS

CRICOS Code: 0100538



PERTH and ADELAIDE

INTAKE DATES (2023)

6 Mar / 21 Aug / 27 Nov

COURSE DURATION

- 3 years full time (2 or 2.5 years when packaged)
- Students must complete a total of 240 credit points (24 units with 10 credit points per unit)
Units will be delivered over 2 semesters per year, with 4 units each semester for a full time load.

MAJORS

- Management
- Digital Marketing
- Hospitality & Events Management

STUDY MODES

- Face-to-face including Work Integrated Learning (WIL)

COST

- \$8,250 per semester / \$16,500 per year (Total = \$49,500)



“ The Business Degree focuses on providing a practical approach to education which aims to enhance the employability of students. To that end a key component is a Work Integrated Learning (WIL) placement where students get an opportunity to work within a business or other type of organisation so that they can make use of the knowledge they have acquired in class, to real world circumstances.

Dr. Malcolm Abbott
Dean, Higher Education

”



HIGHER EDUCATION

ACCOUNTING PROFESSIONAL YEAR PROGRAM (APYP)



PERTH and ADELAIDE

INTAKE DATES (2023)

23 Jan / 20 Feb / 20 Mar / 17 Apr / 15 May / 12 Jun /
10 Jul / 7 Aug / 4 Sep / 2 Oct / 30 Oct / 27 Nov

Intakes in Adelaide have currently been paused, for further information or to register your expression of interest, please contact the Stanley College Admissions team.

CAMPUS

- Available in Perth and Adelaide

COURSE DURATION

- 44 weeks
- 8 hours per week

INTERNSHIP

- 12 week Accounting internship

STUDY MODES

- Face-to-face

COURSE ENTRY REQUIREMENTS#

- Undertake a face-to-face pre-enrolment interview with the authorised Provider to ensure course suitability and viability
- Completed one or more Accounting related degrees as a result of at least two years full time study in Australia
 - The degree/s must be on the approved list of courses for international students (CRICOS)
- Have a current Academic or General IELTS score of 6.0 in each band, or the equivalent score from Pearsons, TOEFL iBT or Cambridge Advanced English (from the 1st of September 2020, evidence of English Language Test results must be provided at enrolment)
- Hold a 485 visa (or other appropriate visa) with a validity of at least 12 months

#From the 1st of June 2022, a positive skills assessment from one of the Professional Accounting Bodies is NOT Required for any applicants wishing to enrol into Accounting PYP. A positive skills assessment will be necessary on completion of the Program in order to apply for Permanent Residency.

COST

- Tuition Fee: \$8,200 (Perth)
- Tuition Fee: \$5,800 (Adelaide)

Stanley College is an approved Accounting PYP provider and endorsed by the following:



AUSTRALIAN COMPUTER SOCIETY PROFESSIONAL YEAR PROGRAM (ACS PYP)



PERTH

INTAKE DATES (2023)

23 Jan / 20 Feb / 20 Mar / 17 Apr / 15 May / 12 Jun /
10 Jul / 7 Aug / 4 Sep / 2 Oct / 30 Oct / 27 Nov

CAMPUS

- Available in Perth

COURSE DURATION

- 44-52 weeks
- 8 hours per week

INTERNSHIP

- 12 week ICT internship

STUDY MODES

- Face-to-face

COURSE ENTRY REQUIREMENTS

- Undertake an individual, documented pre-enrolment interview with Stanley College to ensure program suitability, shared internship expectations, and completion viability.
- Have successfully attained an ICT-related Bachelor or Master degree or higher from an Australian tertiary institution as a result of a minimum of two years' full-time study in Australia prior to commencing ACS PYP per the Australian Study Requirement (ASR)
- Hold a valid passport and visa that allows full work and study rights whilst undertaking the ACS PYP. Prospective applicants who already hold a valid visa are required to hold a minimum of 12 months' validity (365 days) on their visa from the date of ACS PYP commencement
- Hold a current English Language Test result undertaken within the three years immediately prior to the date of ACS PYP commencement and demonstrate an IELTS score of 6.0 in each band (Academic or General), with no band below a 6.0, or the equivalent score from Pearson, TOEFL iBT, Cambridge Advanced English or Occupational English Test

COST

- Tuition Fee: ~~\$11,000~~ \$9,800*

*Scholarship is only available for application submitted before 31 December 2022.

Stanley College is an approved Australian Computer Society Professional Year Program provider.



A member of:



INDUSTRY PARTNERS

PROFESSIONAL YEAR PROGRAMS



HLTAID011 PROVIDE FIRST AID



PERTH

This course provides you with the techniques and skills to confidently administer emergency care and life support to the ill or injured, until medical aid arrives. Students also learn a range of practical skills, including casualty assessment, decision-making and basic life support, including Cardio-Pulmonary Resuscitation (CPR). Successful students receive a Statement of Attainment at the end of the course.

COST: \$120 per person

DURATION: 3 days

BARISTA WORKSHOP



PERTH

Our barista workshop gives participants all of the practical experience they need to be professional coffee makers. It is suitable for both beginners and active baristas - who need the fundamental skills for preparing all styles of great tasting coffee! A Certificate of Participation is issued at the end of the workshop.

COST: \$120 per person

DURATION: 1 day

This workshop is not a CRICOS registered course.

SITHFAB002 Provide Responsible Service of Alcohol (RSA)



PERTH

Responsible service of alcohol is an important part of the health and safety requirements in all WA hotels and licensed restaurants. Indeed, this Nationally-Recognised Unit of Competency is a legal requirement for anyone who is required to serve alcoholic beverages in WA. This unit provides you with the skills and knowledge to responsibly sell and serve alcohol, as required under the Liquor Control Act 1988 in WA.

COST: \$120 per person

DURATION: 2 days

(Including theory and practical components.)

SHORT COURSES





HEAD OFFICE - WEST PERTH CAMPUS (WPC)
69 Outram Street, West Perth WA 6005

PERTH CITY CAMPUS (PCC)
171 James Street, Perth, WA 6003

MIRRABOOKA CAMPUS (MBC)
9 Chesterfield Road Mirrabooka WA 6061

PHONE: +61 8 6371 9999
EMAIL: info@stanleycollege.edu.au
WEBSITE: www.stanleycollege.edu.au

ADELAIDE CITY CAMPUS
Level 1, East 50, Grenfell Street, Zurich House, Adelaide SA 5000
PHONE: +61 8 8120 4140
EMAIL: info@stanleycollege.edu.au


REPRESENTATIVE OFFICE - PHILIPPINES
ADDRESS: Unit 309-310 Executive Building Center,
369 Sen Gil Puyat Ave., Brgy. Bel-Air Makati City, Philippines 1209
MOBILE: +63 998 580 3355
EMAIL: marketing@stanleycollege.edu.au




Stanley International College Pty Ltd Trading as Stanley College
CRICOS PROVIDER CODE: 03047E
RTO Code: 51973
TEQSA Provider No: PRV14050
ABN: 16 130 977 221

Version: 2.0 September 2022


 Find us on Facebook
facebook.com/St StanleyInternationalCollege

 Follow us on Instagram
instagram.com/stanley_college

 Follow us on WeChat
WeChat ID: 斯坦利学院 Stanley College

 Follow us on YouTube
youtube.com/c/St StanleyCollegeRTO51973

 Call us on Skype
Perth, Western Australia, Skype: stanley.college

 Find us on LinkedIn
linkedin.com/school/stanley-college

Every effort has been made to ensure that the information contained in this publication is correct as of 23 September 2022.

This information is subject to amendment without notice. Stanley College reserves the right to add, vary or discontinue, without notice, any unit or course and impose limitations on enrolment on any course, prior to enrolment. Please visit www.stanleycollege.edu.au for the latest updates.

Disclaimer and Copyright Information

Information in this publication is correct as of September 2022 but may be subject to change. Stanley College reserves the right to change the content. This material does not purport to constitute legal or professional advice. Stanley College accepts no responsibility for and makes no representation, whether expressed or implied, as to the accuracy or reliability in any respect of any material in this publication. Except to the extent mandated otherwise by legislation.

© Stanley College 2022

Except as permitted by the Copyright Act 1968, this material may not be reproduced, stored or transmitted without the permission of the copyright owner. All enquiries must be directed to Stanley College.

Published by Stanley College 2020 CRICOS Provider Code 03047E